

How to bring in waste from your home

1. Notify of the contents of waste brought into the Shin-Kankyo Clean Center. ☎0545-35-0081
A booking is required on Saturdays and during year-end and New Year's holidays. Please make a booking via the City of Fuji website or the dedicated booking phone line. ☎0545-30-6636
2. Sort waste in the same way as when dropping off at a collection point.
Put burnable garbage into a special bag for burnable garbage.
Put cans, plastic containers and packaging, and clothing into a special bag for recyclables.
3. Receive an IC card at the entrance calibration station and weigh in.
4. Drop off burnable garbage and recyclables at the designated place in the resource collection building. Drop off pruned branches at the platform (1st floor).
As a general rule, you should unload and transport waste to the designated place by yourself. If you have heavy garbage or a large amount of garbage, please bring along someone else in your vehicle to help.
5. Weigh in at the exit calibration station, and return the IC card.



Attention

- ⦿ You are not permitted to bring in other people's garbage or waste from outside the City of Fuji.
- ⦿ As a general rule, the person who puts out the garbage should come to bring the garbage in.
- ⦿ You may be asked to present documents that confirm that you are a City of Fuji resident. (driver's license, utility bill payment statements, etc.)
- ⦿ Vehicles used to bring in waste must be no more than 2 tons in weight and no more than 4.7 meters in overall length.

Cremation of dead animal remains

The remains of pets such as domestic dogs and cats are cremated in the incinerator for small animal remains in the Shin-Kankyo Clean Center.

Please notify the Shin-Kankyo Clean Center before bringing these in.

Incinerated remains and ashes will not be returned.

The price is 2,090 yen (including tax) per body. (as of October, 2020)

Items not eligible for disposal or collection in the city

Stone, soil, sand	Either handle these yourself, or consult with a landscape contractor.
Fire extinguishers	Either contact your dealer or the Fire Extinguisher Recycle Promotion Center Corporation.
TVs, refrigerators, freezers, washing machines, clothes dryers, air conditioners	Please refer to page 17.
Motorcycles, Motor bicycles.	Please refer to page 18.

Illegal dumping prohibited

The City of Fuji is committed to early detection and prevention of illegal dumping with our illegal dumping monitoring patrol team and staff. When we discover illegal dumping, we investigate in cooperation with the police. Anyone dumping waste illegally will be punished by a fine of up to 10 million yen or imprisonment for up to 5 years.

If you discover illegal dumping, please report it.

令和3年3月発行

富士市

トわ かた べんりちょう

ごみの分け方便利帳

2021.3

英語

Categories of waste	P1
How to dispose of garbage in Fuji City, Designated waste bag	P2
Burnable Garbage	P3.4
Plastic containers and Wrapping materials	P5.6
Recyclable Paper (KOSHI)	P7.8
Clothes・Futon	P9.10
Landfill, etc.	P11~13
Cans / Metals	P14
Pet bottles	P15
Bottles and jars	P16
Method of Disposal for Electrical Appliances restricted by Recycling Electrical Appliances Act	P17
Recycling of motorcycles	P18
Recycling of personal computers	P19
Bringing garbage to the Shin-Kankyo Clean Center	P20.21

Please use the "San-Aru" waste separation app.



Google play



AppStore

Place any masks or tissues used by people suspected of having an infectious disease such as influenza into a plastic bag, seal the bag, and put out as burnable garbage.

Categories of waste



Trash if mixed, resources if separated



Please check the Waste Collection Calendar for waste collection dates in your area.

If you do not have a calendar, please contact the Fuji City Hall Waste Measures Division.



You can also check it on the Fuji City official website.

How to dispose of garbage in Fuji City

Please put out garbage by **8:30** am on day of collection.

Waste is collected on public holidays.
(Waste is not collected on Sundays or during year-end and New Year's holidays.)

If your apartment building, etc. has its own rules, please follow these.

Please check "Koho Fuji" or the City of Fuji website for the year-end and New Year's holiday schedule.

Designated waste bag

Burnable garbage, cans, plastic containers and wrapping materials, waste paper and waste clothes must be put in the Designated Bags before disposal.

There are 2 types of designated bags,

the **"MOERUGOMI SENYO BUKURO"** (Garbage Bag for Burnable Items) and the **"SHIGENBUTSU SENYO BUKURO"** (Garbage Bag for Recyclable Items)

and they are available at supermarkets and home centers.

The designated garbage bags come in 3 sizes: 45 liters (large), 30 liters (middle), 15 liters (small).

When bringing your garbage directly to the Shin-Kankyo Clean Center, please use a designated waste bag.

"MOERUGOMI SENYO BUKURO"
(Garbage Bag for Burnable Items)

"SHIGENBUTSU SENYO BUKURO"
(Garbage Bag for Recyclable Items)



These items must be put into the "Garbage Bag for Recyclable Items"

Plastic containers and wrapping materials

Other papers

Cans

Old clothes



Designated waste bags from other cities, towns, or municipalities cannot be used.

Burnable Garbage



How to dispose

Put the items in the Fuji City's Designated "Garbage Bag for Burnable Items" and bring them to the burnable garbage collection site twice a week.

Do not put your garbage inside other plastic bags (such as plastic bags from the supermarket) and please use only the designated "Garbage Bags for Burnable items".



Can be put out

Food waste

Plastic bags found in supermarkets can also be used to collect burnable kitchen wastes. Wherever possible, do not allow garbage to get wet. "80 percent of the Food waste is liquid" Drain out the liquid before disposing! Try one last squeeze before disposal.



Rubber products



Plastic products



Items without the Pla marks. "プラ".

Dispose of big or bulky garbage without putting them into bags.



Non-recyclable paper or cloth

Paper or cloth that are stained with oil or paint. Very dirty or old clothes with a strong smell. Tissue paper Paper diapers Iron print paper



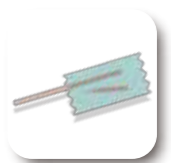
Timber & wooden items

Cut the large burnable garbage into smaller than 50 cm before dispose. Cut large items into pieces no greater than 50 cm x 50 cm. For large diameter items, ensure that diameter is no greater than 10 cm. If unable to cut up items, consult the Shin-Kankyo Clean Center (0545-35-0081). Wooden furniture can be put out on landfill days, etc. without dismantling.



Bamboo skewers

Wrap them in paper or other wrapping materials, or break the tips and cover with vinyl tape and put them in the bag.



Large burnable garbage such as carpets or rugs.

Cut carpets or rugs into 6 - 8 equal parts and put them into designated bags, or fold and tie them with a string before disposal. Electric carpets must be disposed of as landfill garbage



Cannot be put out



Plastic Containers and Wrapping Materials PET bottles Waste Paper Old clothes and bedding Pruned branches Disposable lighters

Plastic Containers and Wrapping Materials



Recycled as plastic products and chemical feed stock.

This category includes Containers and Bags made of plastic which are used for holding products

How to dispose

- Put the items in the Fuji City's "Designated Garbage Bags for Recyclable Items" and bring them to the recyclable items collection site once a week.
- Items with the sign are subject to recycling. →
- Large items that are too big for the bag, such as Styrofoam, are to be disposed of without a bag.

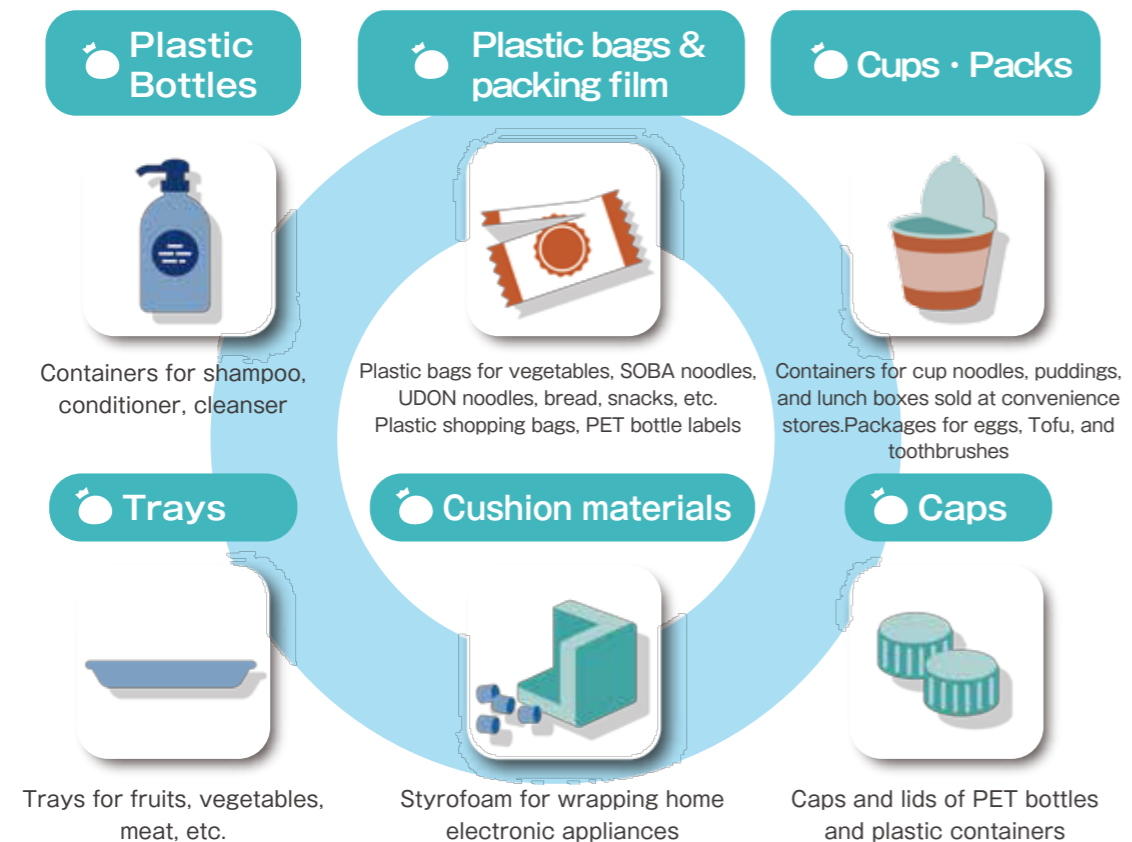


Before putting out waste

Empty the insides and rinse or wash them. (Items with stains which cannot be removed should be disposed as burnable garbage)

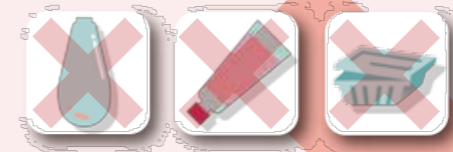
※ Plastic containers can be disposed only when their stains do not transfer to others in the designated bags .

Can be put out



Cannot be put out

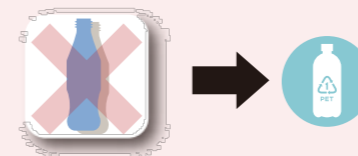
- Items with stains which cannot be removed should be disposed as burnable garbage



- Plastic products themselves like cassette tapes and toys are not included in this category



- Please crush PET bottles on the day that PET bottles are collected, then put them out. However, labels and caps should be put out with plastic containers and packaging.



Attention

- When stickers do not come off the items, the items can be put in the garbage bags with them.
- Large items that are too big for the bag, such as Styrofoam, are to be disposed of without a bag.

Recyclable Paper (KOSHI)



Three organizations which collect Recyclable Papers

Collection by the local government. (at the local collection sites)

Depending on the amount of collected Recyclable Papers, an incentive fee is paid to the local community. It is recommended to dispose of the Recyclable Papers at your local collection site.
Used paper containing a small amount of metal or plastic will still be collected by the city.

Collection by the local community.

Neighborhood associations, PTA, etc. (Check the list of the collection of each organization)

Waste paper collection box operated by a private company, etc.

Types of items collected will vary between collection boxes.
Please remove any metal or plastic before disposing.

Can be put out

Sort and separate by type, then tie with a paper string before putting out.

Newspaper



Flyers can be included.

Magazines

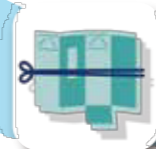


Books, notebooks, paperbacks and encyclopedias are also included. Thin books that are fastened with wire or staples are included.

Cardboard boxes



Paper Cartons



Rinse inside, cut and open them out before disposal. Cartons with aluminum inside should be disposed of as "Other Papers".

The Other Papers

They are papers except for Newspaper, Magazines, Cardboard Boxes and Food Containers made of paper.

You can use any of the following methods.

- ◉ Wrap the items with wrapping paper and bind them.
- ◉ Put the items in a paper bag and tie with a paper string.
- ◉ Put in a resource bag.

Examples

Used paper containing a small amount of metal or plastic will still be collected by the city.



Cannot be put out



Tissues Wet wipes Paper diapers Dirty paper Iron print papers Non-woven fabrics (masks, etc.)
Since the following materials are not used as recyclable paper, dispose of them as burnable garbage.

Attention

Do not dispose of paper in the following ways!
(Prohibited ways of disposal)

- ◉ Bind waste paper with duct tape or vinyl strings
- ◉ Use cardboard boxes as containers
- ◉ Putting various kinds of paper together without sorting them into categories

Clothes · Futon



How to dispose (Clothes)

Separate the garbage into similar categories such as, clothes · cloth, shoes, small articles, put them into the "Garbage bag for recyclable items", and tie up the opening of the bag before disposal.

Clothing can also be placed into clothing collection boxes installed in public facilities such as the Machizukuri Center.



Can be put out

Clothes and cloth



Please wash and dry before disposing.
T-shirts, Suits, Down Jackets, Kimono, Socks, Towels, Mufflers, etc.

Shoes



Leather shoes, sneakers/trainers, pumps
Sandals, slippers
If unsuitable for wear, these are burnable garbage.
Shoes without a pair should be disposed as burnable garbage.

Belts, hats, bags, and other small articles



Belts, business bags, sports bags, back packs, tote bags, hats, stuffed toys (under 15 cm.), etc.
If broken, these are burnable garbage.

Cannot be put out

Mattress (Items containing no metal)
Seat cushions Cushions Rainboots
Curtains Carpets Suitcases



Futon

How to dispose (Futon)

Tie Futon · blankets with a string before disposal.
Please dispose of futons, blankets, etc. at the collection point on the day of collection each month.
Futons and blankets must not be placed in collection boxes such as those at the Machizukuri Center.

Can be put out

Mattresses, duvets, kotatsu covers, blankets, etc.

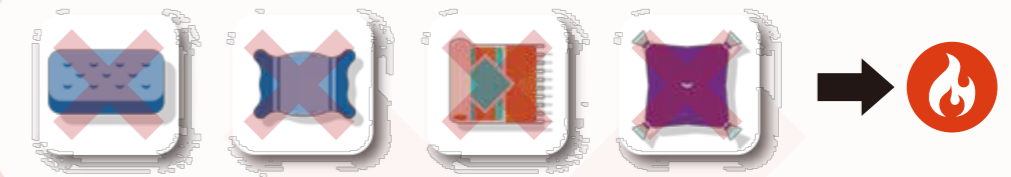


Attention

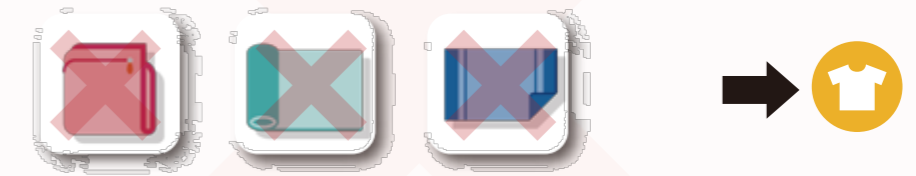
- ⦿ Please do not place in a bag.
- ⦿ You cannot dispose of them when raining.
- ⦿ Please tie up futons and duvets separately, without any other item.
- ⦿ When tying up futons, etc., be careful not to place any objects inside.

Cannot be put out

Please dispose of urethane mattresses and pillows as burnable garbage.



Please dispose of duvet covers and sheets together with clothing.



Please dispose of spring-loaded mattresses as landfill.



Landfill, etc.



How to dispose

- Using the appropriate method for each type of waste, please put out at the recycling collection point by 8:30 am on the day of collection each month.
- Each item should be placed according to the category.
- Call and ask Shin-Kankyo Clean Center (Incinerator Plant) to 0545-35-0081 for more detailed information.

Can be put out

Landfills

Small items should be put in a clear bag so that the contents are visible. Items like broken bottles, knives, light bulbs should be wrapped in paper, put in clear bags and write the item's names on them when disposing. Skis, China, Light bulbs



Home electric appliances

Items that require electric power only. Batteries must be removed. For rechargeable items, ensure the charge is set to zero before putting them out. Items, 80% or more of which are made from metals, are to be disposed as metal and cans.



Large garbage (furniture)

Call Shin-Kankyo Clean Center (Incinerator Plant) before bringing the items when Carried-in.



TVs, Refrigerators, Freezers, Washing machines, Clothes driers, Air conditioners and Motorcycles are not collected by the City. Details concerning the items subject to KADEN RECYCLE, see page 17. See page 18 about motor bikes.

Spray cans

This waste can be harmful.
When disposing, do not mix with other items.

Empty the contents, and place inside a colorless transparent bag without making any holes.



Fluorescent light bulbs

This waste can be harmful.
When disposing, do not mix with other items.

Bulbs which are not broken should be wrapped with paper or put them in their original boxes when disposing.



Disposable lighters

This waste can be harmful.
When disposing, do not mix with other items.

Empty the contents, and place inside a colorless transparent bag.



Batteries Coin batteries

This waste can be harmful.
When disposing, do not mix with other items.

Put the batteries into the red can placed at the collection site.
Alkaline batteries
Manganese batteries
Non-rechargeable lithium batteries
Coin non-rechargeable lithium batteries (model numbers starting with CR or BR). Button batteries and small rechargeable batteries cannot be put out as waste. Please refer to page 13.



Items containing mercury

Mercury thermometers and mercury sphygmomanometers cannot be put out at collection points. Please bring these directly to the Waste Measures Division on the 10th floor of Fuji City Hall or to the Shin-Kankyo Clean Center.

High-value small home appliances

Place mobile phones, compact music players, USB memory sticks, electronic cigarettes, cameras, etc. into collection boxes intended for high-end small household appliances. Please remove any batteries.



Collection box locations

- Fuji City Hall 2nd floor
 - Yoshinaga Machizukuri Center
 - Tagoura Machizukuri Center
 - Takaoka Machizukuri Center
 - Fujikawa Fureai Hall
 - Shin-Kankyo Clean Center
- Waste will not be accepted when these facilities are closed.**



Cannot be put out

Spray cans with remaining contents

If contents are remaining, these cannot be processed by the city. Please process as outlined below.

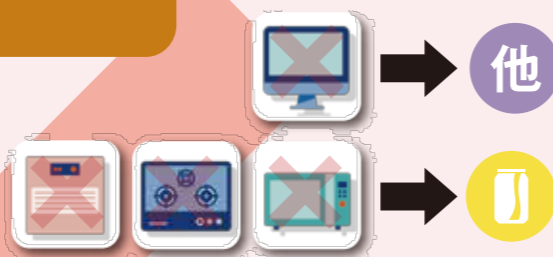
Portable stove gas cylinders	Call and ask Shin-Kankyo Clean Center (Incinerator Plant) to 0545-35-0081 for more detailed information.
Paints, hair dyes, pesticides	Please spray the contents onto waste newspaper (outdoors) before disposing. Please dispose of the contents as burnable garbage.

Car batteries

Please consult your dealer.

Items not collected as small household appliances

- Personal computer
See page 19 for PCs
- Items whose 80% or more are made from metals
Cans & metallic items
Microwave ovens, etc.



TVs, Refrigerators, Freezers, Washing machines, Clothes driers, Air conditioners

TVs, Refrigerators, Freezers, Washing machines, Clothes driers, Air conditioners and Motorcycles are not collected by the City. Details concerning the items subject to KADEN RECYCLE, see page 17. See page 18 about motor bikes.



Batteries not collected by the city

The following types of batteries are not collected by the city. Please bring these to the appropriate recycling partner store. For recycling partner stores, check the Battery Association of Japan website for button batteries and the JBRC website for small rechargeable batteries. When bringing these in, please speak to shop staff.

Button batteries Affix adhesive tape over the battery's electrodes to insulate them, and take the battery to a partner store.

Silver oxide batteries (SR) Zinc-air batteries (PR) Alkaline button batteries (LR)
The first letter of the model number is indicated in parentheses ().
Please dispose of coin-type lithium-ion batteries (CR, BR) at city collection points. (page 12)



Small rechargeable batteries Affix adhesive tape over the terminals to insulate them, and take to a recycling partner store.

Nickel cadmium batteries Nickel metal hydride batteries
Lithium ion batteries Mobile batteries



Cans / Metals



Call and ask Shin-Kankyo Clean Center (Incinerator Plant) to 0545-35-0081 for more detailed information.

How to dispose

Rinse inside of the cans and put them in the "Designated Garbage Bag for Recyclable items" before disposal. Dispose of metals without putting them in the bag. Dispose of metals without putting them in the bag.

Types of cans

Do not crush the cans. They could disturb the recycling process.

Drink cans (aluminum · steel)



Food cans



Cans smaller than 4 liters



Please empty spray cans, without making any hole, and dispose of them as landfill (page 12).

Types of metal

Items whose 80% or more are made from metals

Remove kerosene and batteries.



Cans over 4 liters

Empty the insides and dispose of them. For the leftover paint, soak it up with a cloth or let it solidify before disposing as burnable garbage.



Needles and nails

Put them in a container like a Tea can, write the items' name on the surface and dispose of it without putting it in the "Garbage Bags for Recyclable items"



Bicycles

Before disposing of a bicycle, please cancel its anti-crime registration at the store where you bought it.



For a power-assisted bicycle, please remove any batteries and bring it into one of the following recycling partner stores.

Watai Auto Shop 1-6-23 Nishikicho, Fuji City
Cycle Base Asahi Fuji Store 375 Aobacho, Fuji City

Pet bottles



How to dispose

- Please place into the collection net at the collection point on the morning of the day of collection each month.
- Please do not put too many bottles in the net and leave enough space (about 20% empty space) so that the net close properly.
- Pet bottles with the "PET 1 mark" are collected. (For drinks, soy sauce, MIRIN, etc.)



Before putting out waste



① Remove the caps and labels



② Rinse and dry.



③ Step on them to crush.

Attention

- Waste items with contents remaining cannot be collected.
- The labels and caps should be disposed of as "plastic containers and wrapping materials"
- Please make sure to put only pet bottles in the net. Do not include plastic bags.

Bad examples of disposing plastic bottles (Prohibited method of disposal)

- With content still leftover
- With garbage inside
- Disposed of in a bag
- With caps and labels still attached

Bottles and jars



How to dispose

- Please place into the collection container at the collection point on the morning of the day of collection each month.
- The crates are stacked and collected, so leave about 20 % of the top space empty.
- Do not place into container while still inside a plastic bag, etc.



Before putting out waste

1. Remove the caps



Metal lids
→Categorized as Cans · Metals
Plastic lids
→Categorized as the Plastic Containers and Wrapping materials.

2. Rinse inside



Can be put out

Cooking oil bottles
Vinegar bottles
Jars of Jam
Bottles for cosmetics
Salad dressing bottles
Bottles for coffee, etc
Beer bottles



Cannot be put out

The items below cannot be collected on the Bottle collection days!



Please dispose of them as Landfill Garbage (see p.11)

Opaque-white colored bottles, glass products, glass plates, fluorescent light bulbs, china ware, broken bottles, cups
Bottles with contents are not collected.

他

Method of Disposal for Electrical Appliances restricted by Recycling Electrical Appliances Act.

Following 6 electrical appliances are subjected to be collected for recycling according to the Recycling Electrical Appliances Act. Televisions, Refrigerators, Freezers, Washing Machines, Clothes Dryers, and Air Conditioners. They are not collected by the Fuji-shi local government even if they are disposed of at regular garbage collection sites. It is illegal to dismantle the appliances by yourself and dispose of them at the collection sites. Please pay the required recycling fee and dispose of the items in the following methods. Table wares and futon dryers should be disposed as Landfill garbage.



Disposal method

To be accepted by Electric Appliance Retail Stores

When buying a replacement, consult with the store, pay the disposal fee (recycling fee + transportation fee), and have them take it.

To be collected by Waste Collectors / Transporter Companies

Consult with the collection and transportation provider, pay the disposal fee (recycling fee + transportation fee), and have them come to your house and pick it up. Depending on the vendor, you may need to pay the recycling fee at a post office in advance.

【 Contacts 】

Fuji City Cooperative Association for General Wastes Tel. 72-5353

To take them by yourself to the designated collection site

Designated pick-up location: Take to Shinohara Sangyo Co., Ltd., pay the recycling fee, and have them take it. All the domestic manufacturing companies (Kaden Maker) designate the contractors to recycle their products. The contractors are called the Designated Collection Site (Sitei Hikitori Basho). Old Electrical Appliances restricted by Recycling Electrical Appliances Act should be taken to the nearest Designated Collection Site (Sitei Hikitori Basho) by yourself.

【 The Designated Collection Sites (Sitei Hikitori Basho) 】
 Shinohara Sangyo Co. Ltd. (in the Ukishima Kogyo Danchi)
 Address: 2608-43 Nakasato, Fuji-shi
 Phone Number : 0545-32-2160
 Please see the website of Shinohara Sangyo Co., Ltd. for operating days.



Recycling of motorcycles

Retailers and manufacturing companies are responsible for recycling the motorcycles. The recycling fees are not charged when the recycling system for motorcycles is used. The Fuji-shi local government does not collect motorcycles for recycling.

Recyclable items

Motorcycles Mopeds (scooters)



For more detailed information
 Ask at Nirinsha Recycle Call Center
 Phone number : 050-3000-0727
 Business hours : 9 : 30 ~ 17 : 00 (Closed on Saturdays, Sundays, National holidays and New year holiday)
 Web page <http://www.jarc.or.jp/motorcycle/>
 As this excludes some manufacturers, please confirm in advance.



Disposal method

Motorcycles can be brought to the designated collection sites.

The designated collection site in Fuji-shi is Shinohara Sangyo Co. Ltd. (See page 17)

Motorcycles can be brought into the agencies who accept scrapping and recycling motorcycles.

The cost for transport and collection is charged. Ask the agencies for more detailed information.

1. Consultation, confirmation

Contact the agencies with the sticker below, or the Call Center to make sure your motorcycle is subject to the Motorcycle Recycling System

2. Prepare the necessary documents for bringing in

Motorcycles which are still registered at any District Transport Bureaus or local government cannot be recycled. Go through the procedure for discarding vehicles first, then bring the motorcycles to the designated collection sites.

Documents showing that it has been scrapped

	Inquiries
Gentsuki (Mopeds smaller than 124cc) → Haisha Shinkoku Uketsukesho (Certificate of receipt for disposal of motorcycle)	Fuji City Hall Municipal Tax Department (3rd floor of City Hall) ☎0545-55-2735
Kei Nirin (Motorcycles 125~250cc) → Keijidosha Todokedezumi Hennouzumi Kakuninsho (Certificate of Discarded Small Vehicle Registration)	Shizuoka Transport Bureau, Numazu Automobile Inspection and Registration Office (Numazu City) ☎050-5540-2051
Kogata Nirin (Motorcycles smaller than 250cc) → Jidosha Kensasho Henno Shomeisho (Certificate of Inspection of Discarded Vehicle)	

Documents to verify your identity

Driver's license, National Health Insurance card, Passport, etc.



Recycling of personal computers

Personal computers no longer in use at householders are processed along with following methods. They are appropriately recycled at manufacturers.



Disposal method

Bring them in directly to the Shin-Kankyo Clean Center.

Free of charge

Displays are also accepted. See page 20 about the Shin-Kankyo Clean Center and its business hours. "PC recycle mark" is not necessary.

Personal data should be deleted before dispose. When bringing in waste, you may be asked to present documents (driver's license, etc.) that prove that you are a City of Fuji resident.

PCs are not collected at local garbage collection site.

Apply to the manufacture and send by Yu-pack.

You can also ask the PC manufacture to dispose PCs. See following methods.

1. Call the manufacturer's office and ask for recycling of PCs.
2. A form of Yu-pack (parcel-delivery service by post office) is sent by the manufacture company. Simply pack the PC with plastic bags and attach the form.
3. Bring it to a post office or ask the post office for collection.



With the "PC recycle mark", recycle fees are not applied (the post fee is included)
For the recycling of personal computers, please check the website of the PC 3R Promotion Center.

Bringing garbage to the Shin-Kankyo Clean Center



The Shin-Kankyo Clean Center accepts household waste collected in the City of Fuji (excluding used paper) free of charge. If you have a large amount of waste, please bring it in at least 30 minutes before collection time finishes.

Shin-Kankyo Clean Center

Address: 676 Obuchi, Fuji City ☎0545-35-0031

Business hours Mondays to Fridays 8:30~12:00, 13:00~16:00

Saturdays (Booking required) 8:30~11:00



Location & waste disposal route map

→ Burnable garbage & recyclable waste disposal route map

→ Route to Fujisan Eco-Topia and Fuji Kaguya-no-Yu (garbage cannot be brought in)

