



# Urui River Flood Hazard Map

Created in March 2021

### How to use the map

1. Look for your house, school and place of work and mark them.
  2. Confirm the dangers associated with a flood through the legend.
- House collapse danger zone  
 Inside/Outside (Legend) Inside/Outside (Legend)   
 Sediment danger alert area  
 m to m (Legend)   
 Inundation depth  
 m to m (Legend)
- Advance to Step 1 to Step 3 on the reverse side and complete MW Timeline for heavy rain.



### Rough estimate of inundation depth

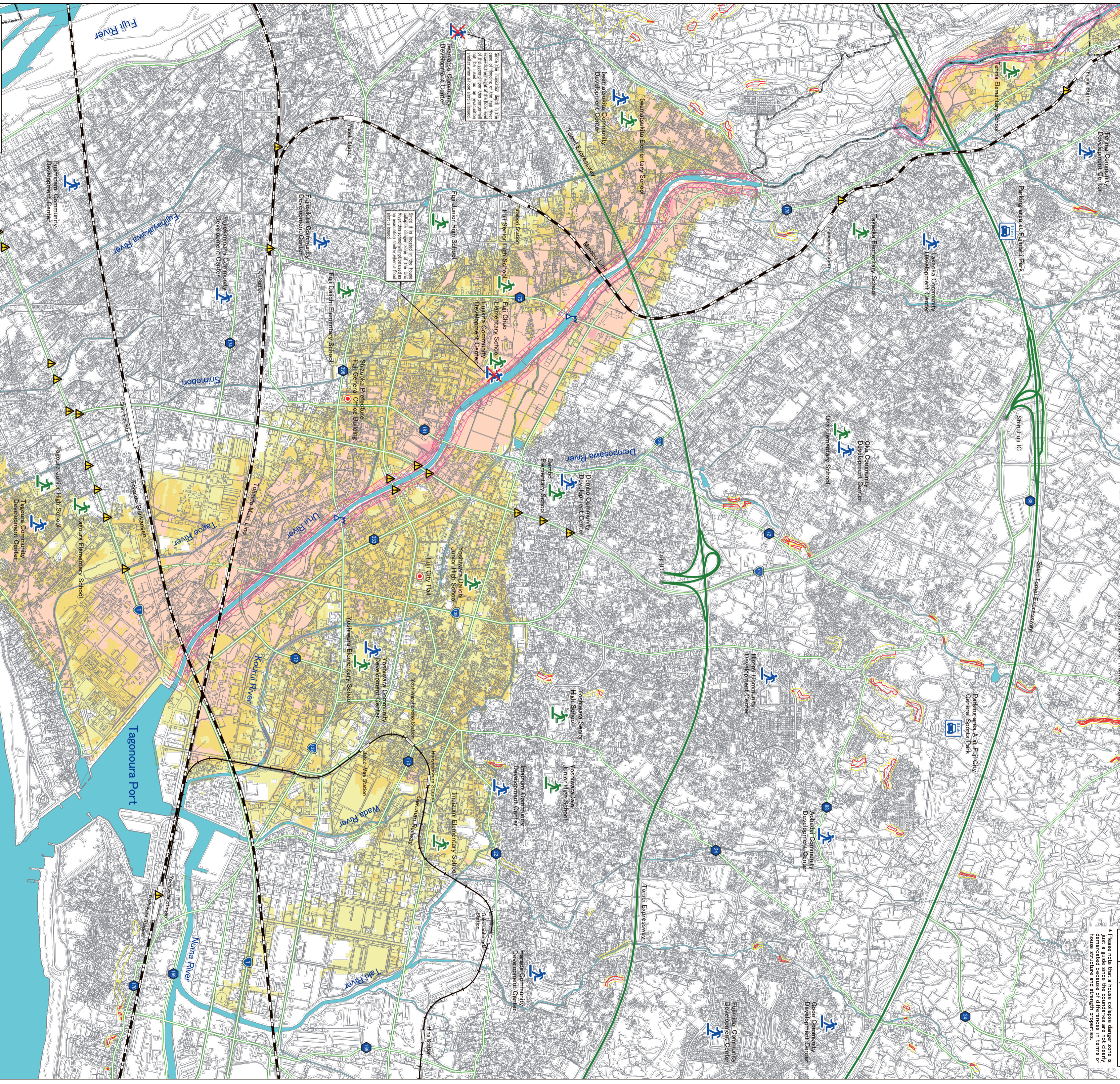
Inundation Depth (m) Rough estimate of water depth  
 As a guide to the level of flood  
 10m Inundation depth (10m or higher)  
 5m Inundation depth (5m to 10m)  
 0.5m Inundation depth (0.5m to 5m)

As a guide to the area prone to house collapse  
 1m Inundation depth (1m or higher)  
 0.5m Inundation depth (0.5m to 1m)  
 0.2m Inundation depth (0.2m to 0.5m)

Please note that a house collapse danger zone is demarcated because of differences in terms of house structure and strength properties.  
 Areas where houses may be washed away or collapse in the event of a flood.

### Legend (Areas prone to flood/inundation)

	House collapse danger zone (Flood flow, bank erosion)
	Area where houses may be washed away or collapse in the event of a flood.
	Below 0.5 m
	0.5 m to below 1.0 m
	1.0 m to below 3.0 m
	3.0 m to below 5.0 m
	5.0 m to below 10.0 m



Since the inundation depth is 10m or higher, the flood flow exceeds the height of the floor area. In such cases, the floor area is not used as an evacuation shelter when a flood occurs.

Since it is located in the house collapse danger zone of the Urui River, the evacuation shelter area is a flood risk area.

### Legend (evacuation shelters and other)

	Early-stage evacuation shelter
	Emergency evacuation shelter
	* Note * Early-stage evacuation shelters that flood (temporary) vehicle shelter in the event of a flood
	City Hall, General Office Building
	Tone Expressway & Shin-Tone Expressway
	National road
	Prefectural road and main city road
	Railway (JR)
	Gakuhon Railway

### Legend (Disaster danger information)

	Alert area under the Sediment Disaster Prevention Act
	Special alert area under the Sediment Disaster Prevention Act
	Underpass
	Water level gauging station

\* After flood-related evacuation information for alert vehicle shelters in the event of a flood  
 In the event of a flood  
 Parking area A at Fujinoh Park  
 Parking area A at Fujinoh Sports Park  
 Parking area to the east of Fujinoh Park Training Center



\* When river floods and sediment disasters are likely to occur in the city because of a typhoon or heavy rain, the city will open district community development centers as early-stage evacuation shelters before the wind and rain intensify.

Early-stage evacuation shelter	Inundation Depth (m)	Early-stage evacuation shelter	Inundation Depth (m)
Yoshikawa Community Development Center	0.3m	Ouchi Community Development Center	—
Danzo Community Development Center	—	Fujikida Community Development Center	—
Irazumi Community Development Center	—	Fujishiro Community Development Center	—
Aboshi Community Development Center	—	Fujinomiya Community Development Center	—
Yoshitaga Community Development Center	—	Fujisawa Community Development Center	—
Motokawara Community Development Center	—	Imanishi Community Development Center	—
Sudo Community Development Center	—	Matsuo Community Development Center	—
Ushikawa Community Development Center	—	Takada Community Development Center	—
Hirada Community Development Center	—	Hiron Community Development Center	—
Fujidai Community Development Center	—	Terama Community Development Center	—
Gode Community Development Center	—	Oka Community Development Center	—
Yoshinaga Community Development Center	—	—	—

\* After issuing the Urui River flood-related evacuation information for alert level 3 or higher, the city will open the following schools in ten districts where inundation is likely to occur as emergency evacuation shelters.

Emergency evacuation shelter	Inundation Depth (m)
Yoshikawa Elementary School	0.6m
Yoshikawa Junior High School	—
Yoshikawa Middle Junior High School	0.8m
Yoshikawa Elementary School	0.5m
Yoshikawa Senior High School	—
Fuji Daiichi Elementary School	—
Fuji Daiichi Elementary School	—
Fuji Junior High School	—
Fuji Daiichi Elementary School	1.0m
Fuji Senior High School	0.8m
Fujikawa Community Development Center	0.8m
Fujikawa Elementary School	0.5m
Tagoura Junior High School	0.3m
Imanatsuka Elementary School	0.4m
Takada Elementary School	—
Terama Elementary School	0.7m
Oka Elementary School	—